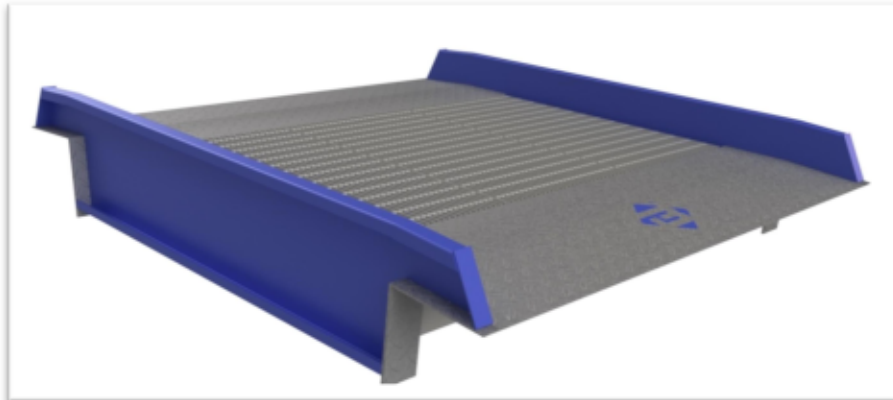


## STEEL CROSSOVER BRIDGE Model COB

Bridge the gap with a Bluff Crossover Bridge.



- Sturdy steel construction
- Transition over gaps such as ditches, waterways or uneven topography
- Standard capacities from 16,000 lbs to 30,000 lbs
- Lengths available up to 50'
- 8" tall curbs on each side serve as runoff protection
- Option for handrails – for gap depths of more than 48", handrails are recommended
- Can be built to meet any specifications – worksheet required

